



Retina MacBook 2017 Lower Case Assembly Replacement

Replace the lower case assembly with battery on the Retina MacBook 2017.

Written By: Tobias Isakeit



INTRODUCTION

Use this guide to replace your Retina MacBook 2017's lower case assembly together with the battery as a single unit.

The battery is strongly glued into place and removing it from the lower case is beyond the scope of this guide, but it may be removed with a [liquid solvent](#) and gentle prying.



TOOLS:

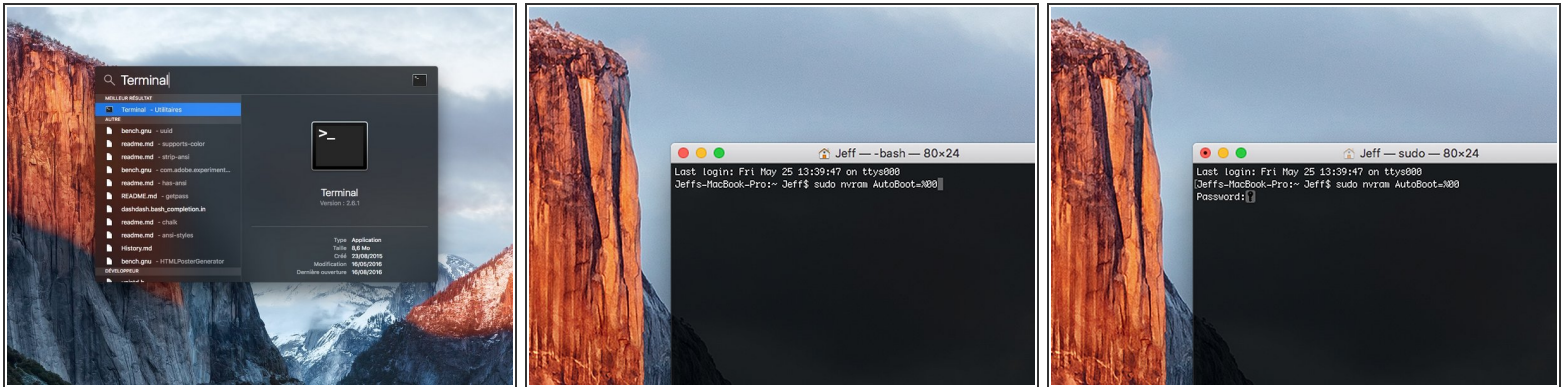
- [P5 Pentalobe Screwdriver Retina MacBook Pro and Air](#) (1)
- [Spudger](#) (1)
- [Tweezers](#) (1)
- [iPad Battery Isolation Pick](#) (1)
- [T5 Torx Screwdriver](#) (1)
- [Phillips #00 Screwdriver](#) (1)
- [iFixit Opening Tools](#) (1)
- [iOpener](#) (1)
- [T3 Torx Screwdriver](#) (1)



PARTS:

- [MacBook 12" Retina \(Early 2016/2017\) Lower Case Assembly](#) (1)
- [MacBook 12" Retina \(Early 2016\) Lower Case](#) (1)
- [MacBook 12" Retina \(Early 2015 to 2017\) Lower Case Screw Set](#) (4)




Step 1 — Disable Auto Boot



- i** Before starting this procedure, you must disable your Mac's **Auto Boot** feature. Auto Boot powers on your Mac when you open the lid, and may be accidentally triggered during disassembly. [Use this guide](#) or follow the abbreviated instructions below to disable Auto Boot.
- Power on your Mac and launch **Terminal**.
 - Copy and paste the following command (or type it exactly) into Terminal:
 - **sudo nvram AutoBoot=%00**
 - Press **[return]**. If prompted, enter your administrator password and press **[return]** again. *Note: Your return key may also be labeled ↵ or "enter."*
- i** You can now safely power down your Mac and open the bottom case, without it accidentally powering on.
- ★** When your repair is complete and your Mac is successfully reassembled, re-enable Auto Boot with the following command:
- **sudo nvram AutoBoot=%03**

Step 2 — Lower Case Assembly Opening



-  Before proceeding, unplug and power down your MacBook. Close the display and lay it on a soft surface, top-side down.
- Remove the following eight screws securing the lower case:
 - Two 1.8 mm P5 Pentolobe screws
 - Four 2.9 mm P5 Pentolobe screws
 - Two 6.1 mm P5 Pentolobe screws
-  Note the orientation of the screws as you remove them—they need to be reinstalled at a slight angle.
-  Throughout this repair, [keep track of each screw](#) and make sure it goes back exactly where it came from to avoid damaging your device.

Step 3



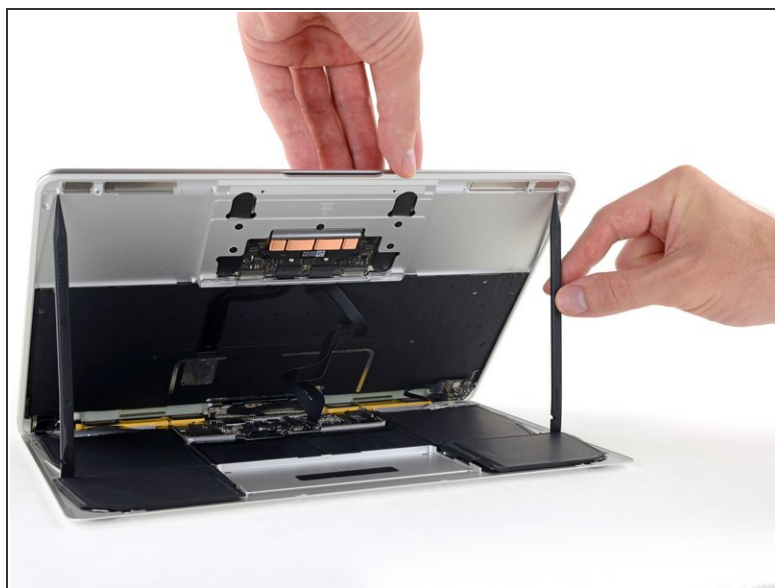
- Wedge your fingers between the upper case and the lower case, starting from the rear of the MacBook between the hinges.
- ⚠ Lift the lower case only slightly to avoid damaging the cables that connect the lower case to the upper case.
 - Keeping a firm grip, lift steadily until the lower case separates slightly from the upper case.
- ℹ You may experience a lot of resistance when lifting the lower case. If necessary, slide an opening pick or other ESD-safe pry tool down the side edges of the lower case to pop the two hidden retaining clips free.
- ☑ During reassembly, to re-engage the clips, press firmly near both side edges of the lower case (near where the pick is inserted in the third image) until you hear the clips snap into place.

Step 4



- While holding the lower case in place, carefully flip the MacBook over so the Apple logo faces up.

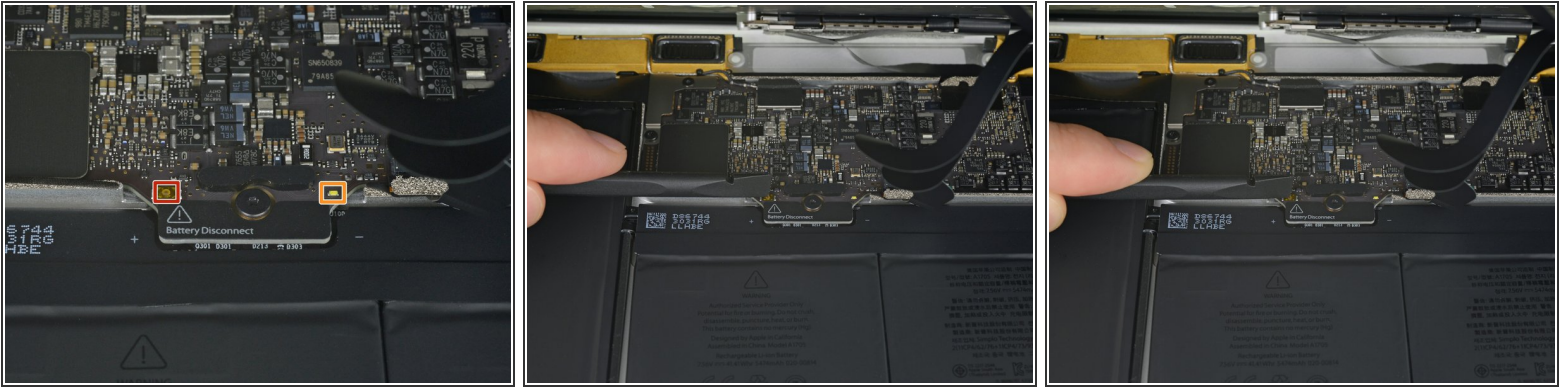
Step 5



- Lift the upper case and display together from the front edge and raise it to about a 45° angle.

 It may be helpful to prop the MacBook open in this position for the next step.

Step 6



- Use the flat end of a spudger to press and hold the small gold 'battery disconnect' button.
 - If the power LED is lit up, continue holding the button until the LED goes dark, and then release. This may take up to 10 seconds.
 - If the LED does not light, release the button after 5-10 seconds. Press and hold it again for 5-10 seconds, and release. Finally, press and hold it a third time for 5-10 seconds, and release.
- i** This step ensures the MacBook is fully powered down and safe to work on.

Step 7




- Close the MacBook and carefully flip it upside-down.

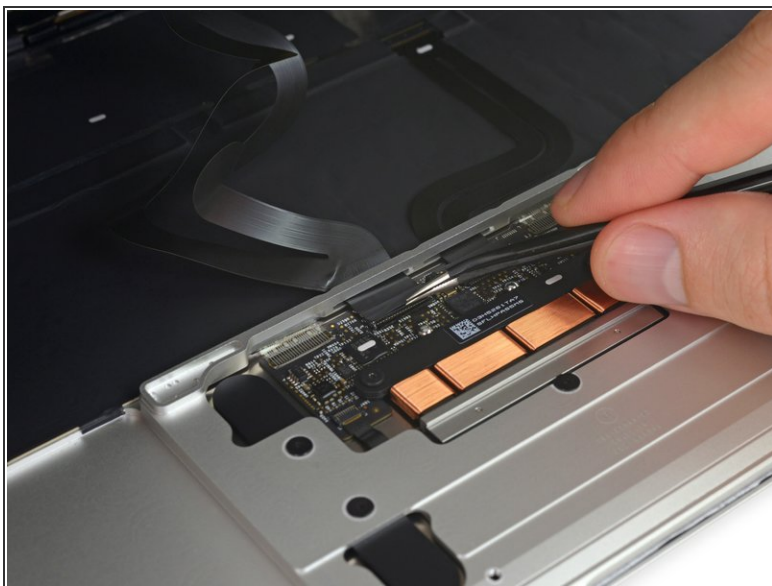
Step 8



- Lifting from the front edge, open the lower case to an angle of about 45°.

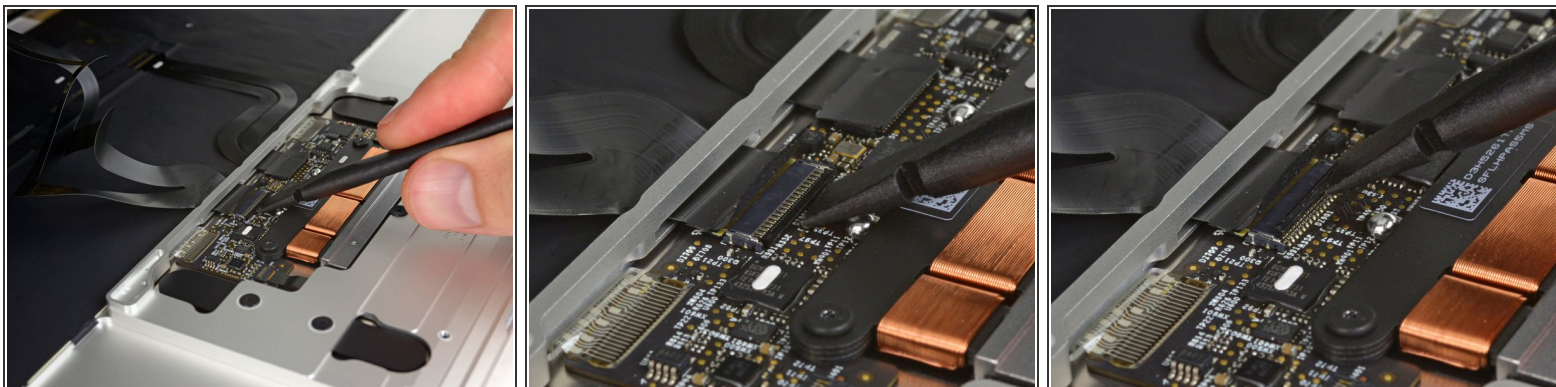
 Take care not to damage the ribbon cables that still attach the lower case to the MacBook.

Step 9



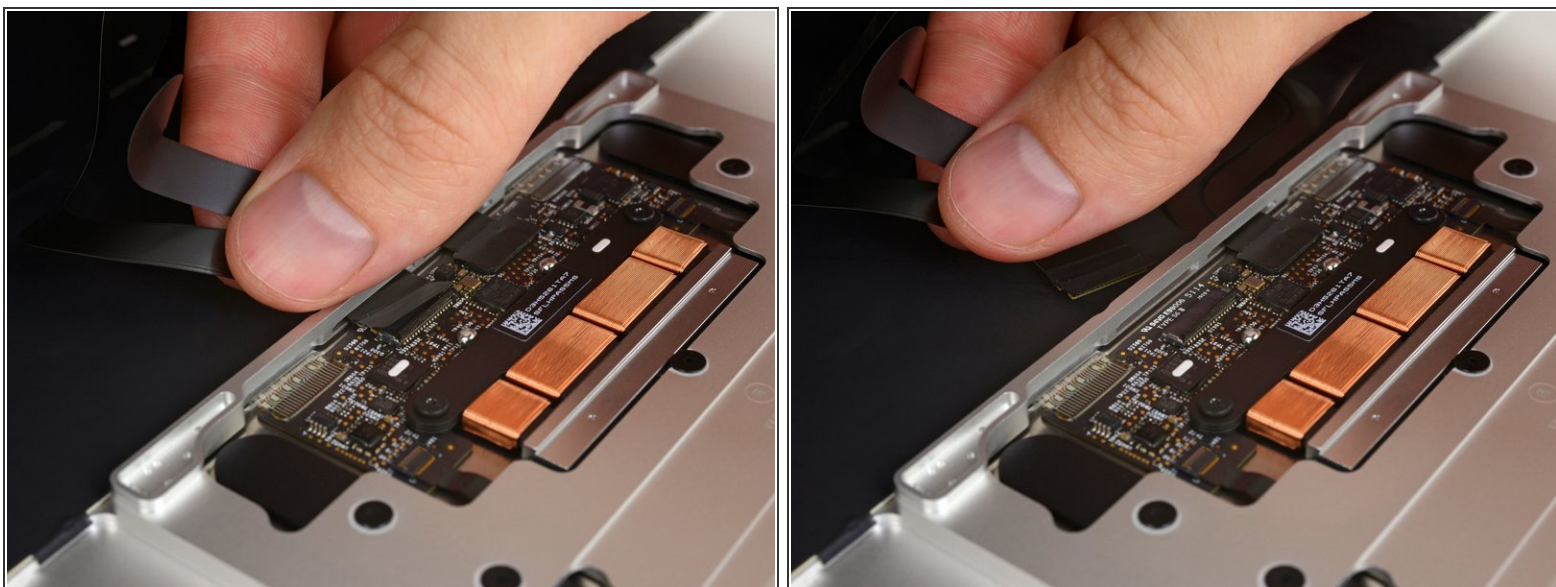
- Use tweezers to peel back the tape covering the trackpad cable ZIF connector.

Step 10



- Use a spudger to carefully flip up the retaining flap on the trackpad cable [ZIF connector](#).

Step 11




- Disconnect the trackpad ribbon cable from the trackpad by pulling it gently through its slot in the frame.

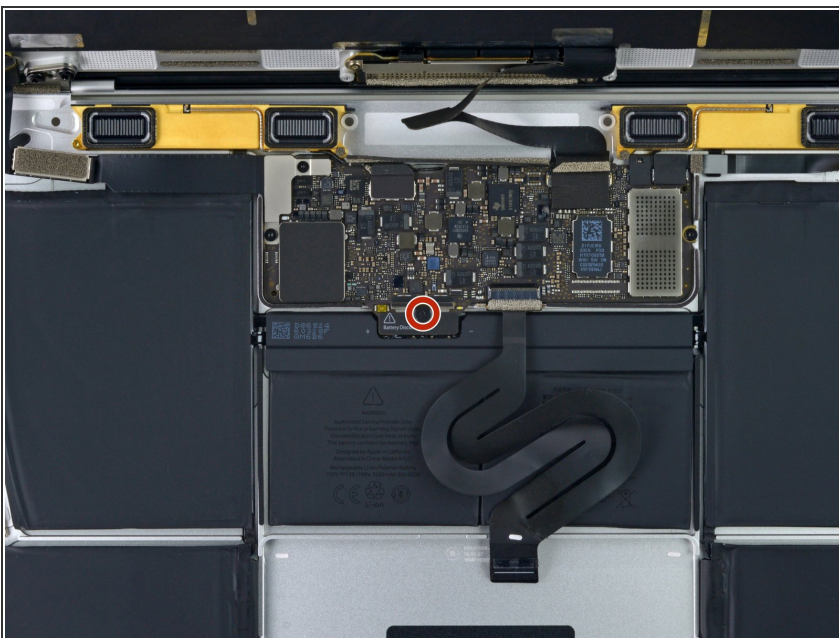
Step 12



- Carefully close the MacBook and flip it over once again, so that the Apple logo faces up.
- Lifting from the front edge, raise the upper case/display assembly to about a 90° angle, and prop it up against something sturdy so you don't have to hold it.
- Add a piece of tape near the track pad to secure the upper case and prevent accidental movement.

 It's possible to open the MacBook all the way and lay both sides down flat, but this may damage the flex cables and is not recommended.

Step 13



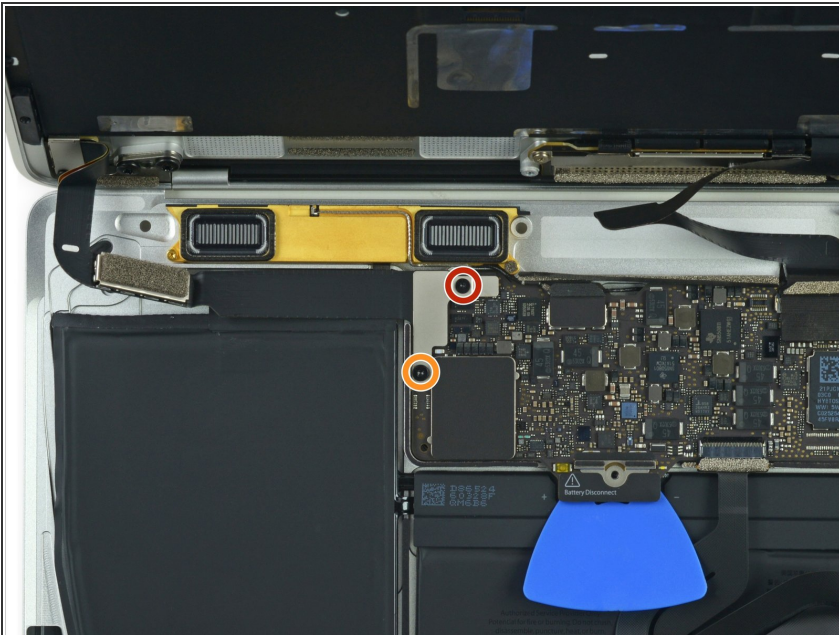
- Remove the single 2.9 mm T5 Torx screw securing the battery connector to the logic board.

Step 14



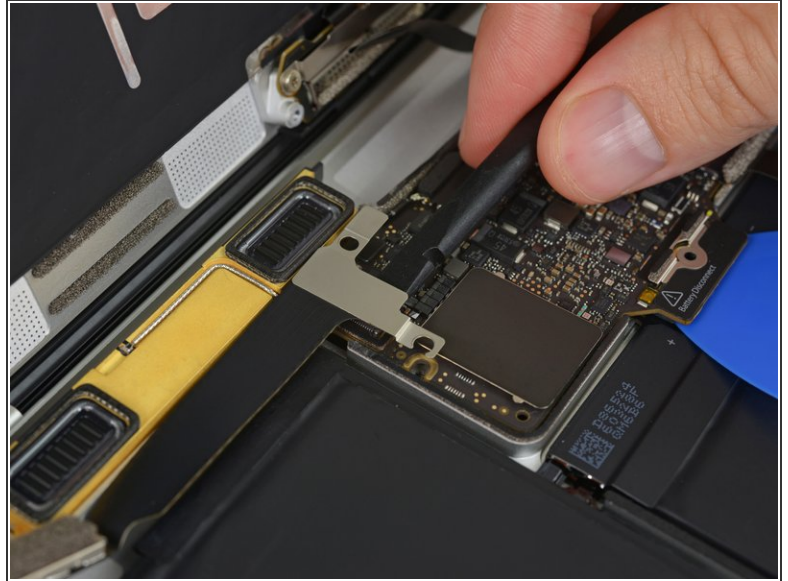
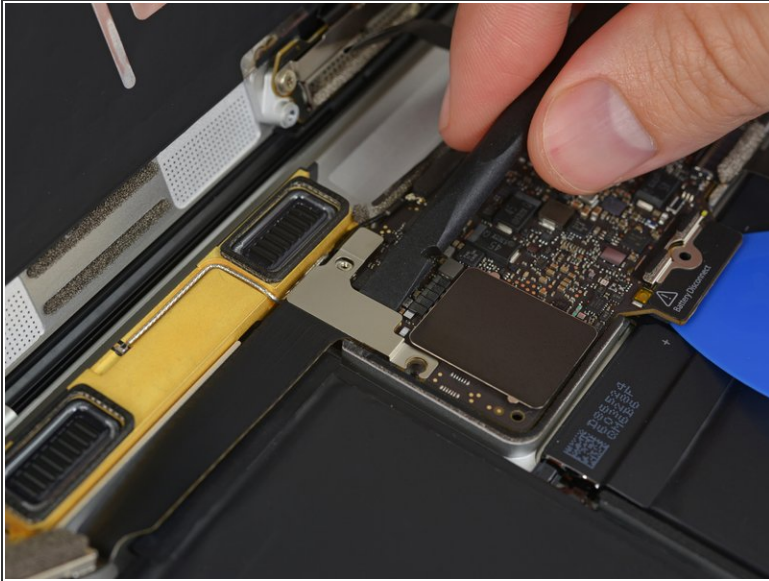
- As an added precaution, you may physically disconnect the battery by inserting a [battery isolation pick](#) between the logic board and the battery connector.

Step 15 — USB-C and Audio Jack Disconnect



- Remove the two screws securing the USB-C port cable bracket:
 - 1.1 mm Phillips #00 screw
 - 3.5 mm T5 Torx screw

Step 16



- Use the flat end of a spudger to disconnect the USB-C port cable bracket by prying it straight up from the logic board.
- ☑ To reconnect this cable, first line up the metal bracket over the screw holes, then press down on the middle of the bracket. Make sure it's aligned correctly, or you may damage the connector.

Step 17



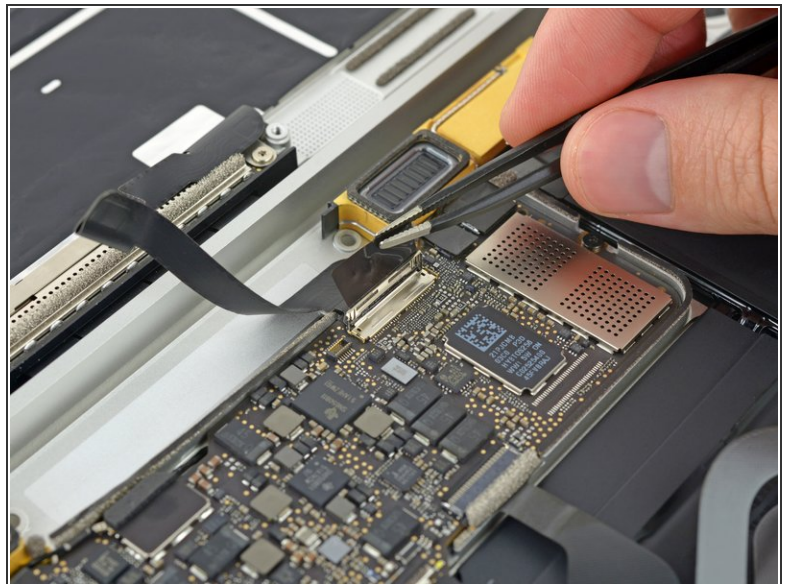
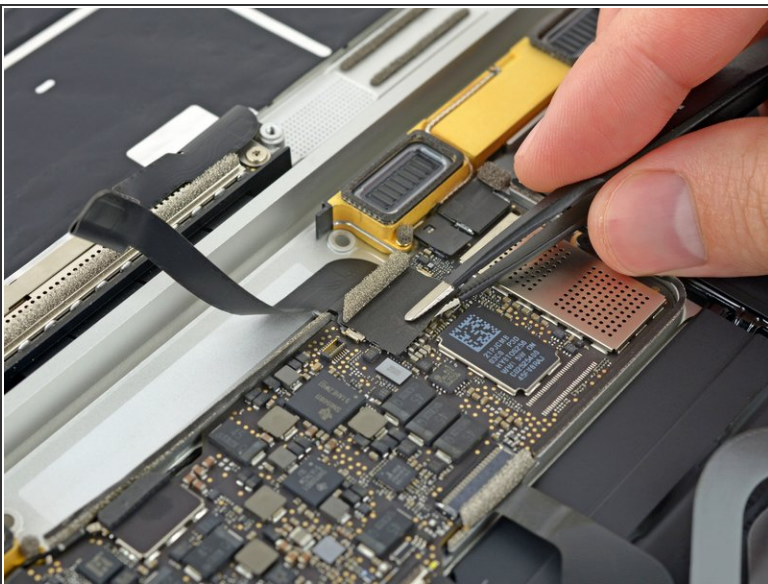
- Use a spudger to flip open the retaining flap on the audio jack board cable ZIF connector.

Step 18



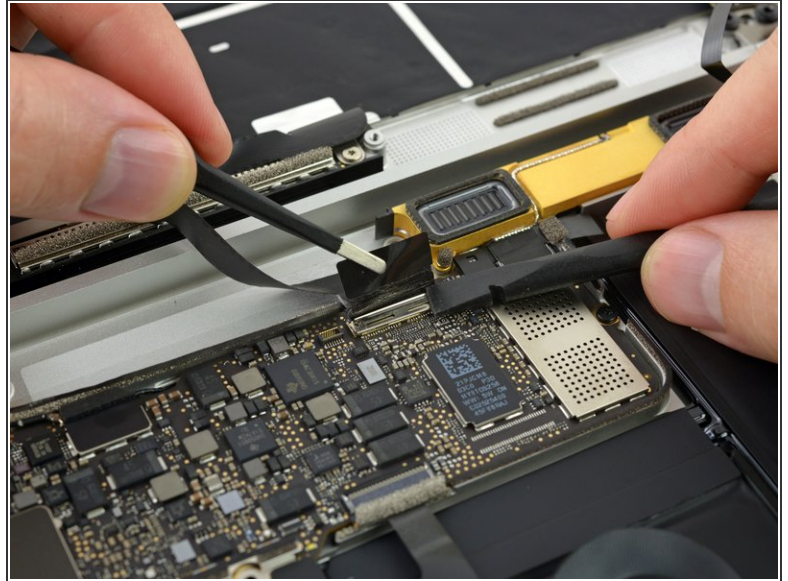
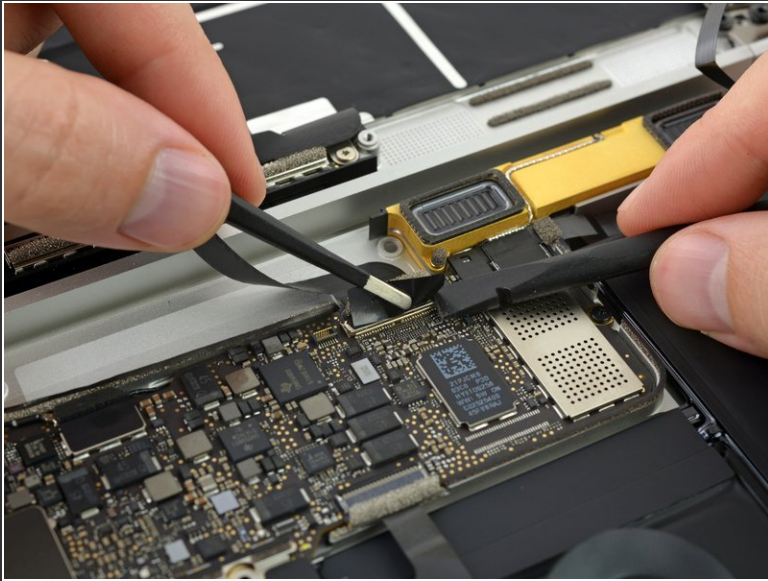
- Disconnect the audio jack board ribbon cable by pulling it straight back out of the ZIF connector.
- ★ During reassembly, orient the ribbon cable so that the side with the white stripe faces you, as shown.
- i At this point it is possible to open the macbook all the way and to lay it flat on a table without causing any damage to the flex cables.

Step 19 — Lower Case Assembly Removal



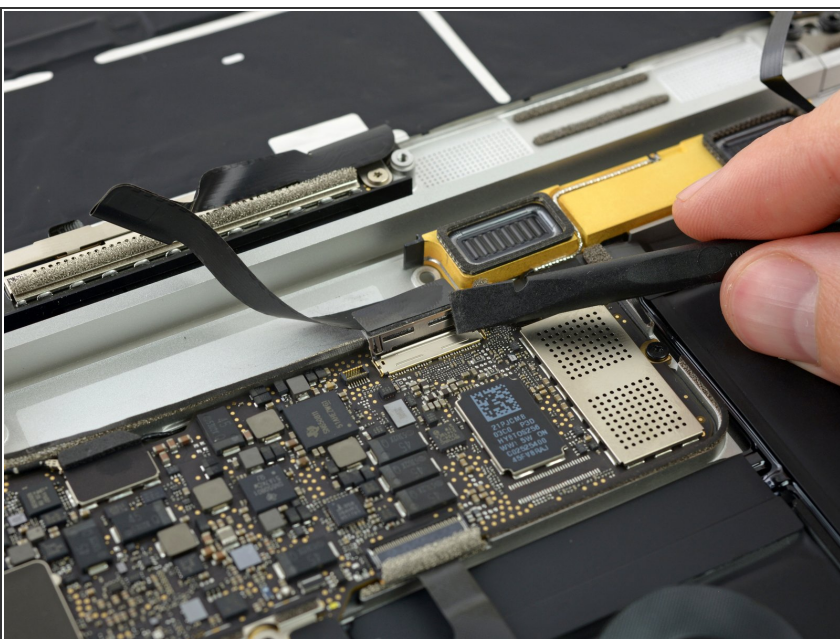
- Use tweezers to peel back the tape covering the display cable connector.

Step 20



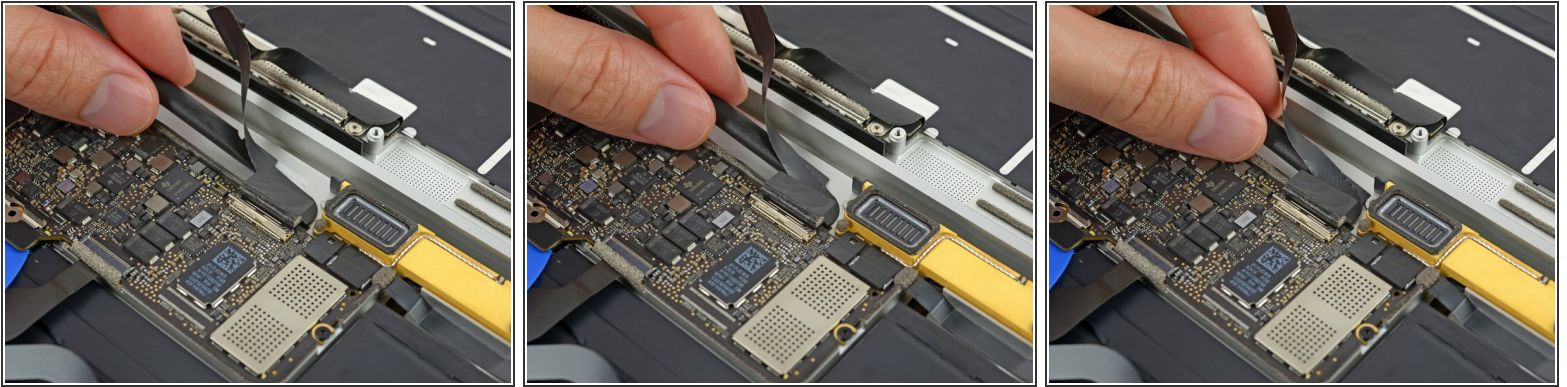
- i** It's possible the metal retaining flap on the display cable connector may flip open, remaining stuck to the tape.
- If so, use the flat end of a spudger to hold down the retaining flap while peeling the tape away with the tweezers.

Step 21



- Use the flat end of a spudger to flip open the retaining flap on the display cable connector.
- Try to keep it clear of the tape, or it may re-adhere and make cable removal difficult.

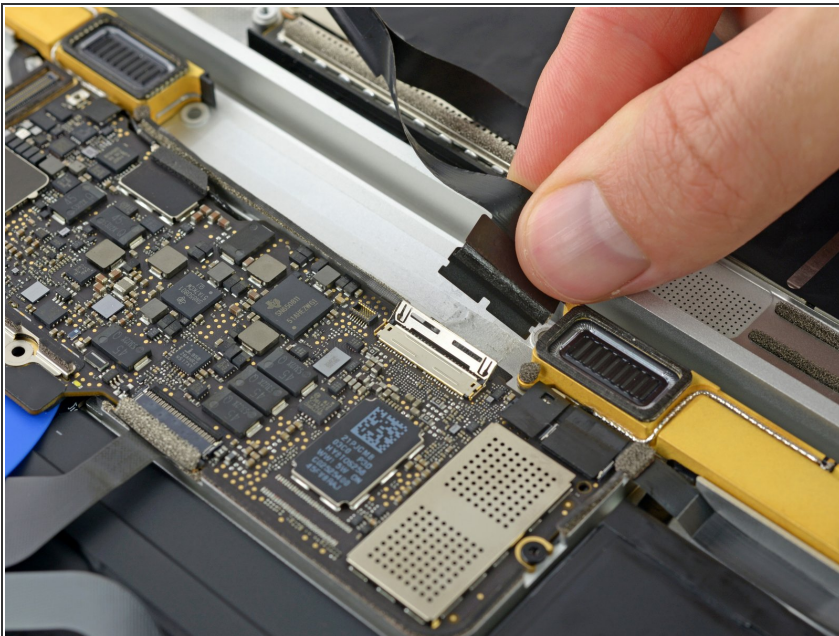
Step 22



- Carefully slide the flat end of a spudger underneath the display cable to separate the adhesive holding it to the lower case.

⚠ Take care not to damage the cable. If the adhesive is very strong, heat the case directly beneath the cable with an [iOpener](#) to soften the adhesive, and then try again.

Step 23

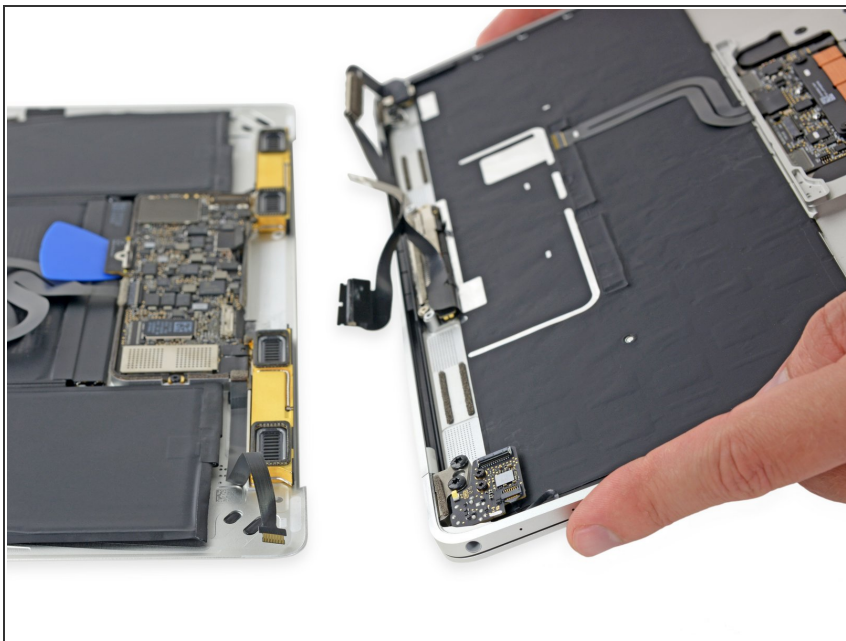


- Disconnect the display cable by gently pulling it straight out of its connector.

⚠ Immediately close the retaining flap.

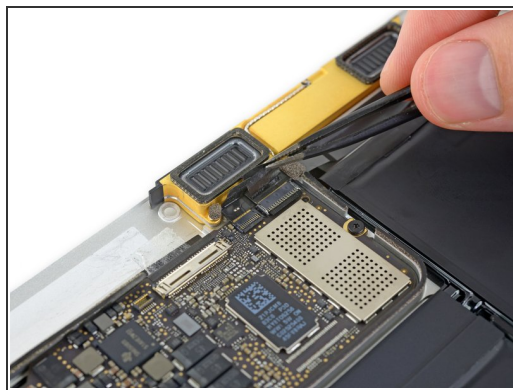
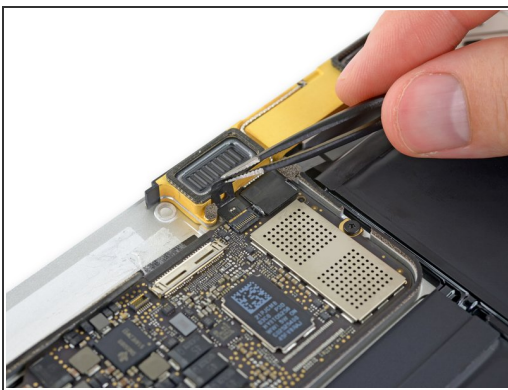
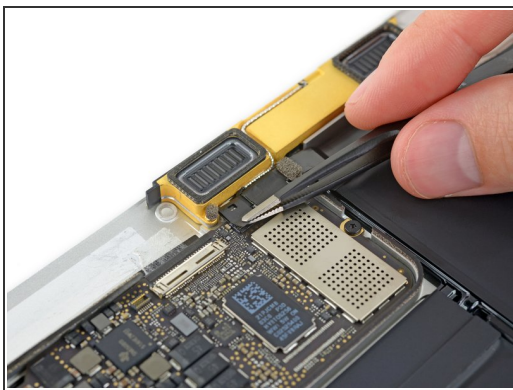
- ★ The flap must remain **closed** when the cable is reinserted during reassembly. Line up the cable with the gold contacts facing down, and gently slide it into the **closed** connector. Take care not to crimp or damage the cable. When fully inserted, the indentations on the sides should not be visible.

Step 24



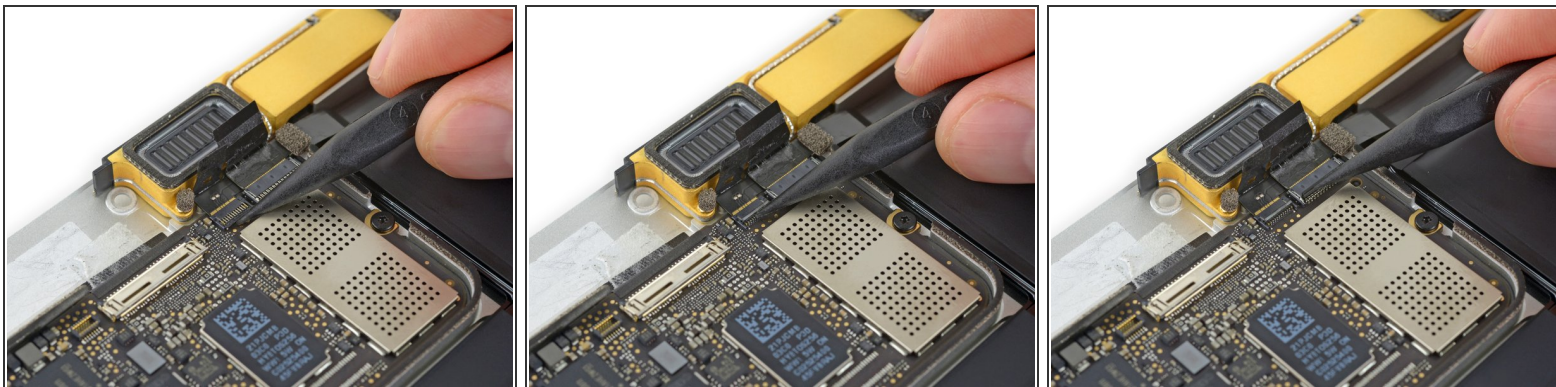
- Separate the upper case assembly from the lower case assembly.

Step 25 — Logic Board



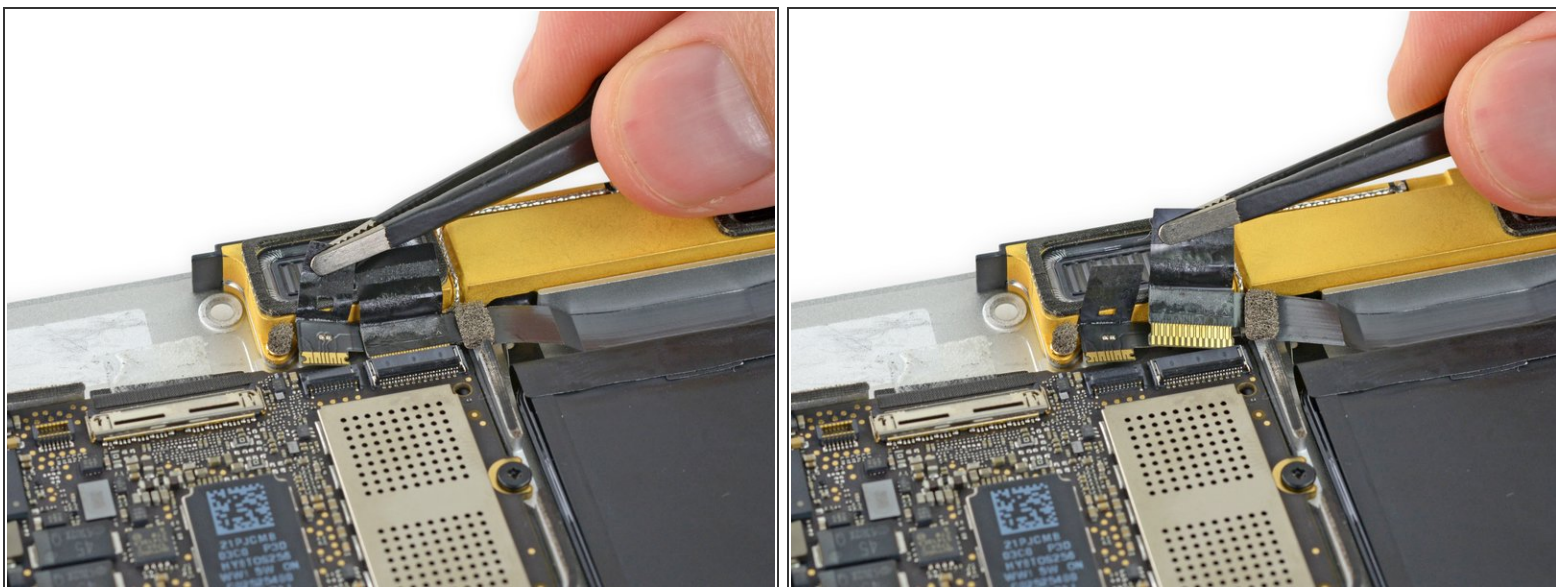
- Use tweezers to peel up the tape covering the two ZIF connectors—one for the right speaker cable, and one for the audio jack board cable.

Step 26



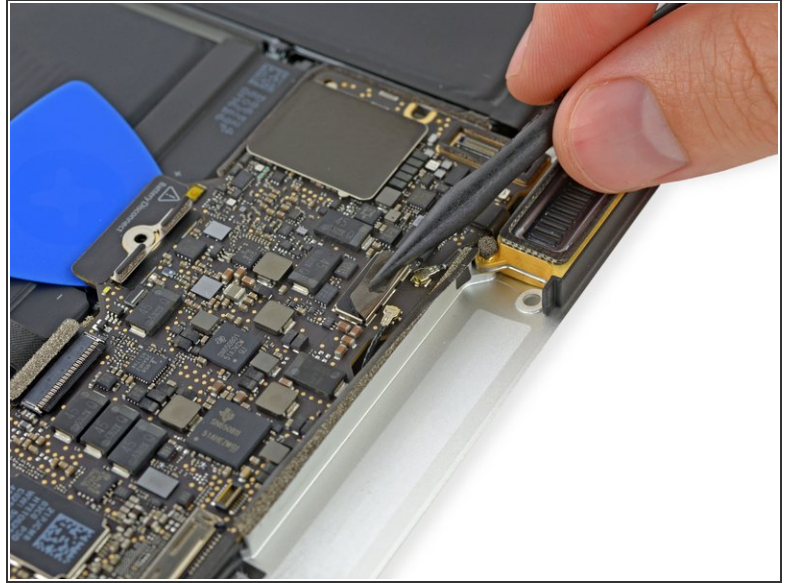
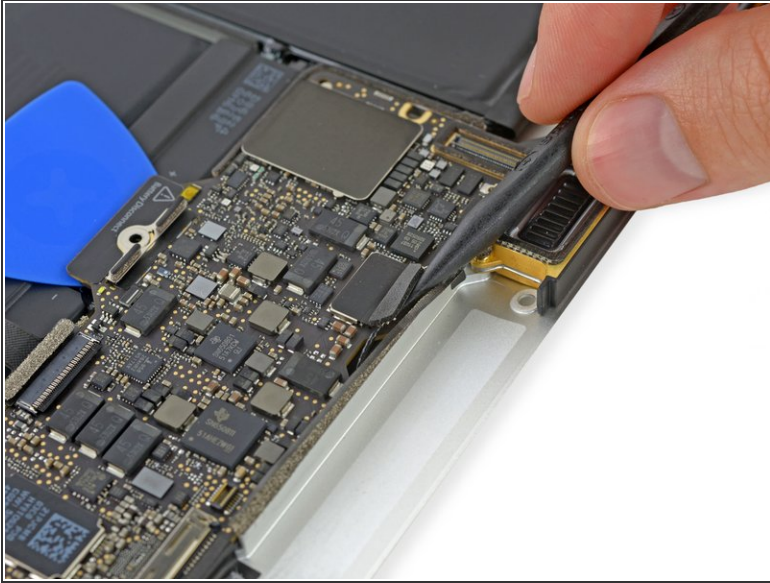
- Use the point of a spudger to flip up both ZIF connector retaining flaps.

Step 27



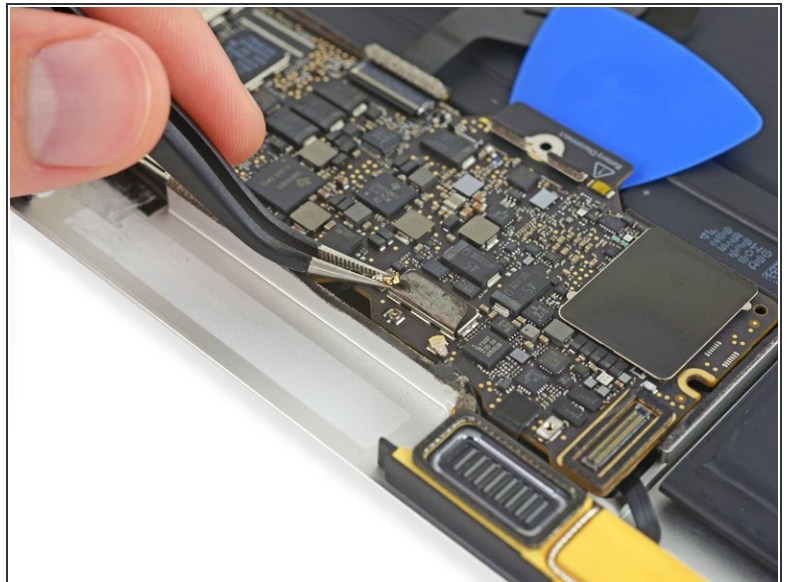
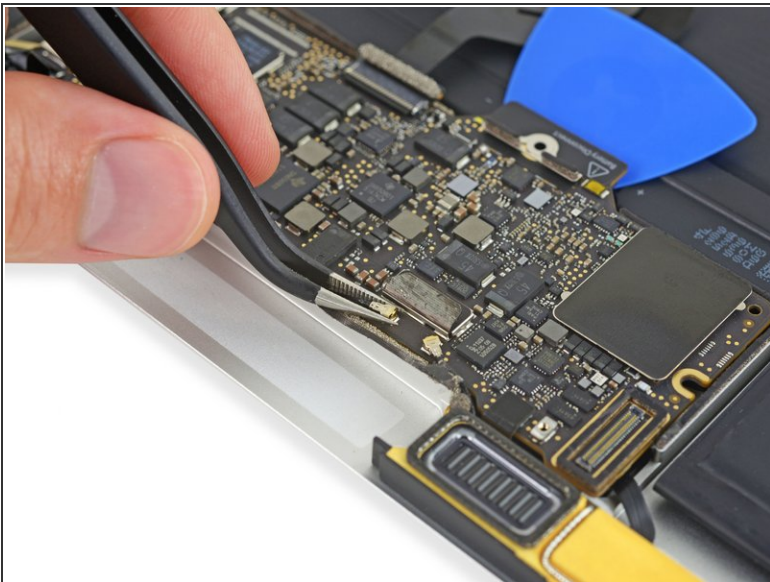
- Carefully pull straight back on the two pieces of tape you just peeled up to disconnect the two ribbon cables.

Step 28




- Use the point of a spudger to peel up the foam pad covering the two antenna connectors.

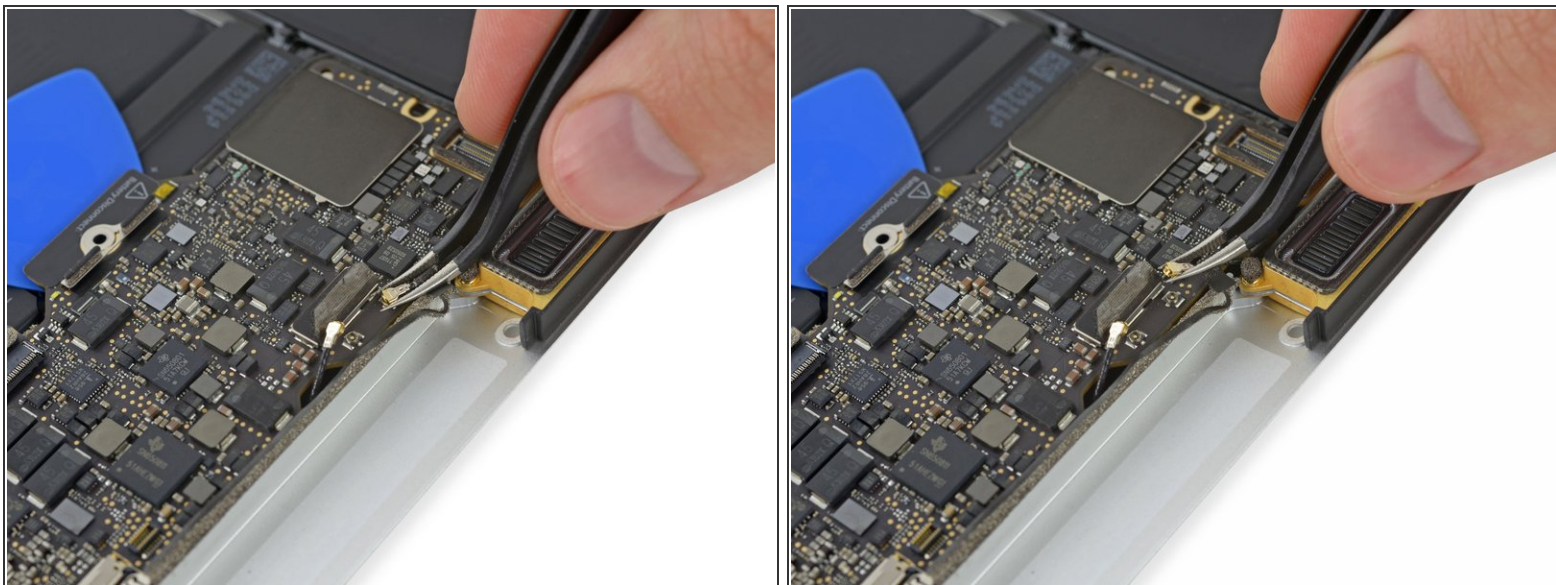
Step 29




- Use tweezers to disconnect the first antenna connector by lifting it straight up from its socket.

 The antenna connectors and sockets are extremely fragile. Be very careful to lift only on the connector, and not on the socket itself. Do not lift under the cable, or put any unnecessary strain on it.

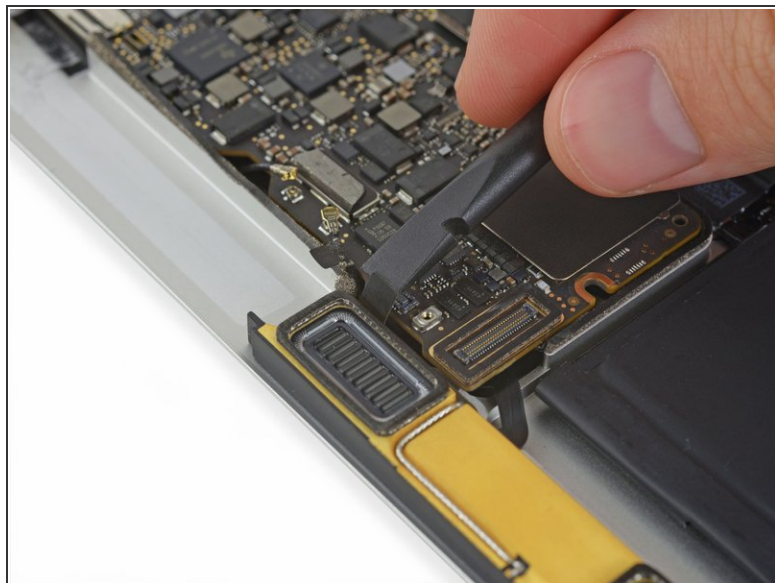
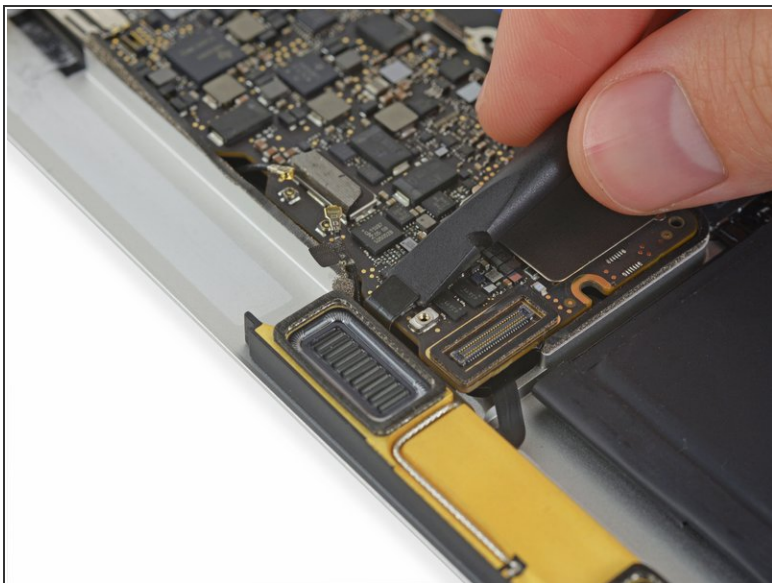
Step 30



- Use tweezers to disconnect the second antenna connector by lifting it straight up from its socket.

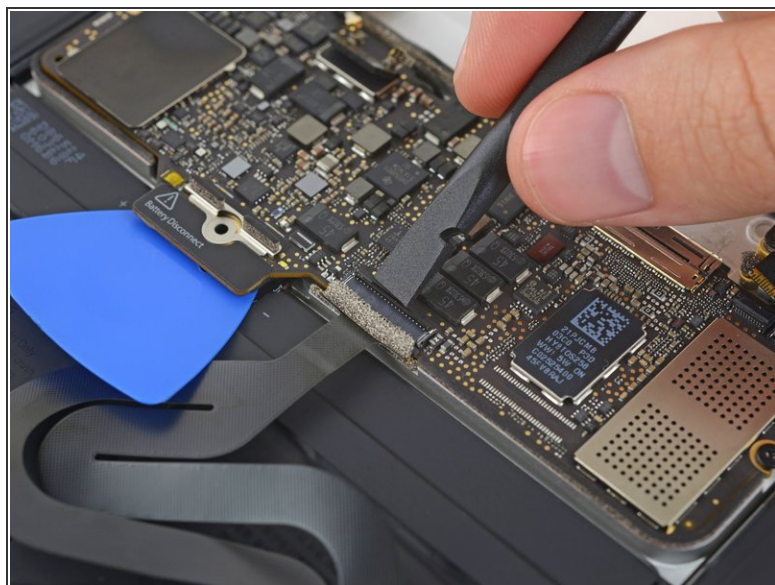
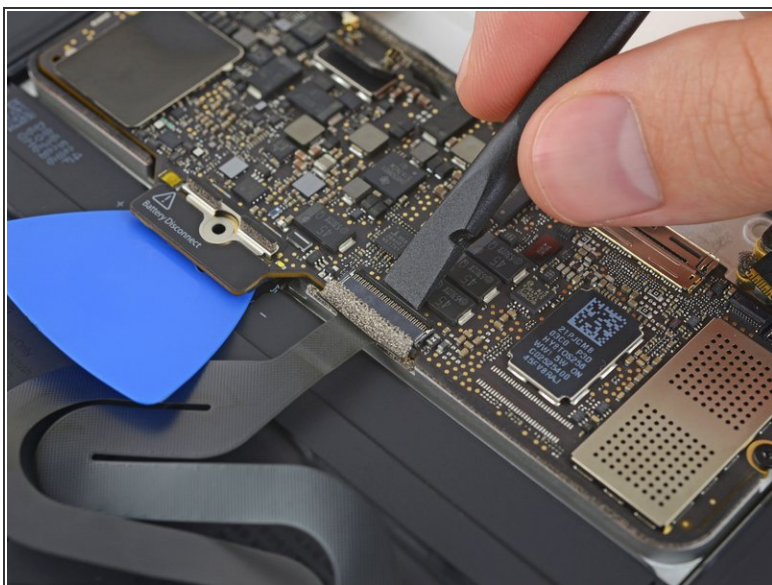
 The antenna connectors and sockets are extremely fragile. Be very careful to lift only on the connector, and not on the socket itself. Do not lift under the cable, or put any unnecessary strain on it.

Step 31



- Use a spudger to disconnect the left speaker cable connector by prying it straight up from the logic board.

Step 32



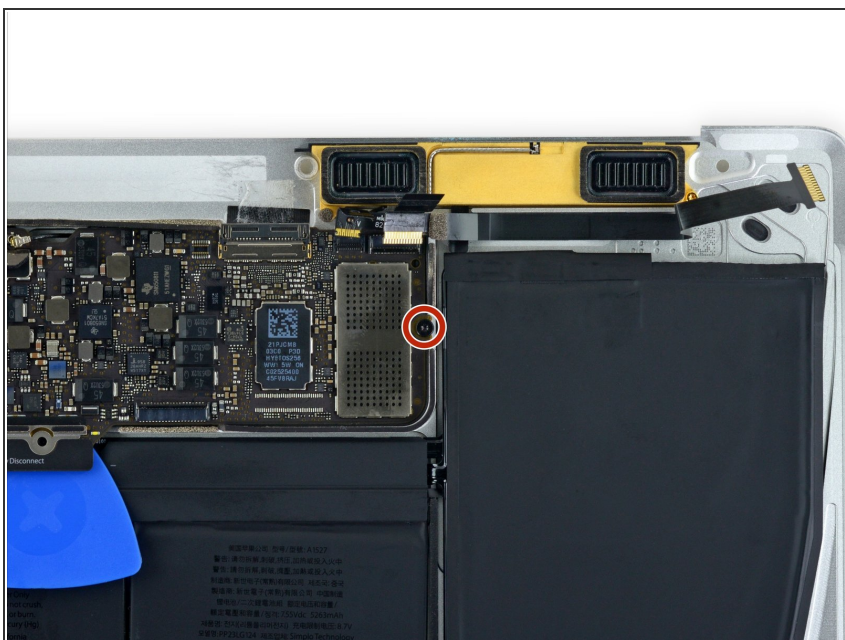
- Use a spudger to flip up the retaining flap on the trackpad cable ZIF connector.

Step 33



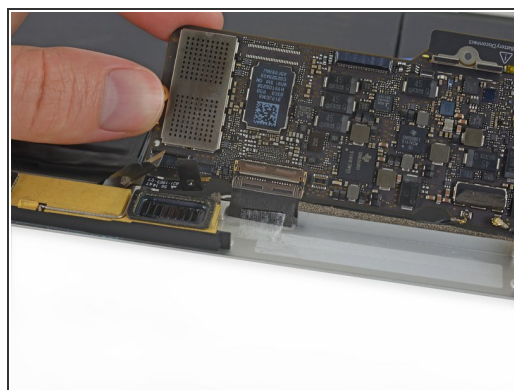
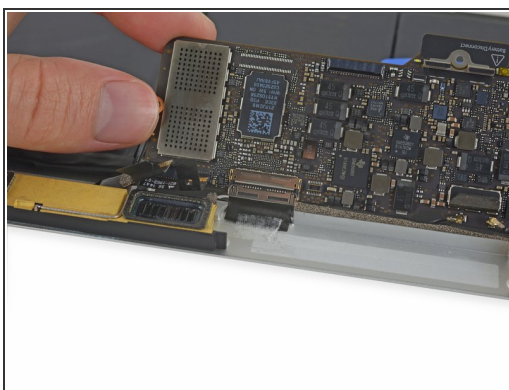
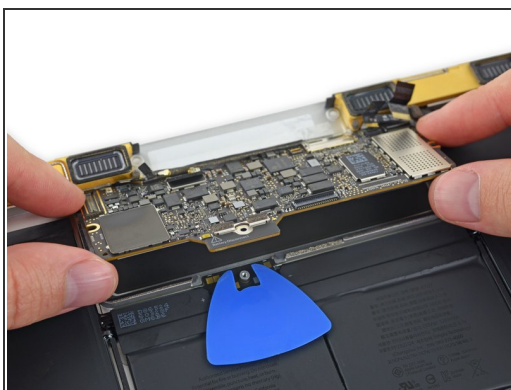
- Disconnect the trackpad cable from the logic board by gently pulling it straight out of its connector.

Step 34



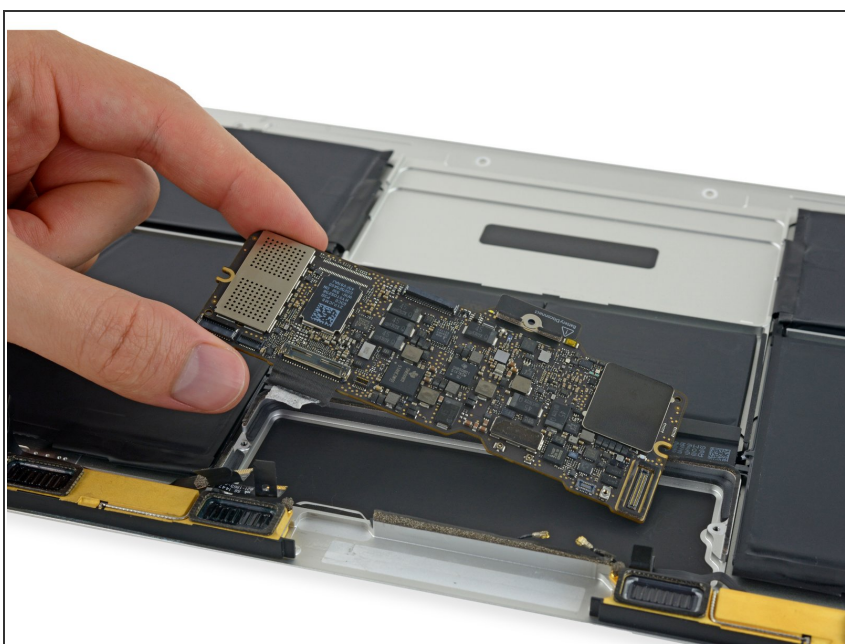
- Remove the single 3.5 mm T5 Torx screw securing the logic board to the lower case.

Step 35



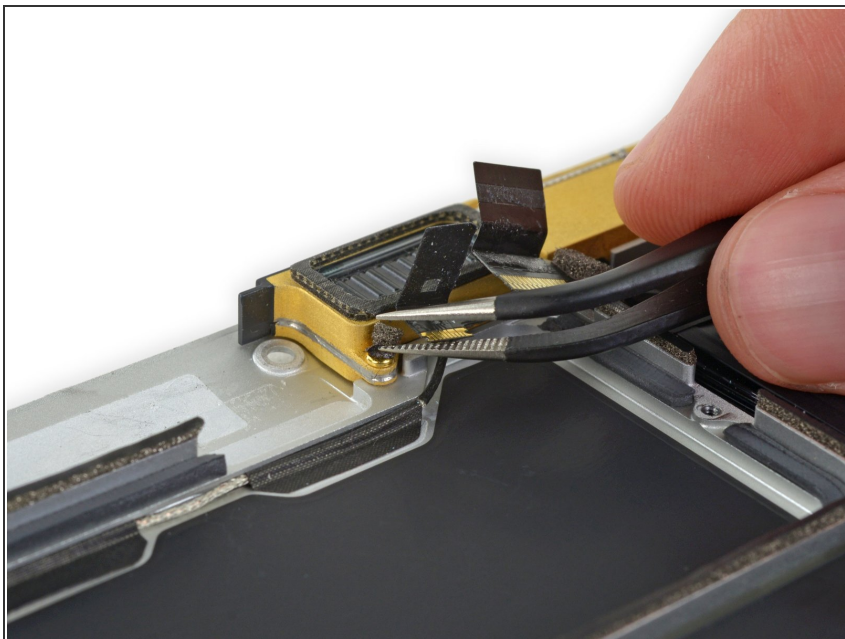
- Flip up the front edge of the logic board.
 - ⚠ Handle the logic board only by its edges.
- Lift and detach the EMI tape securing the logic board to the lower case.
 - ℹ Warming the tape with a hair dryer or iOpener makes it easier to detach.
 - ☑ Reattach the tape securely during reassembly.

Step 36



- Remove the logic board.

Step 37 — Right Speaker



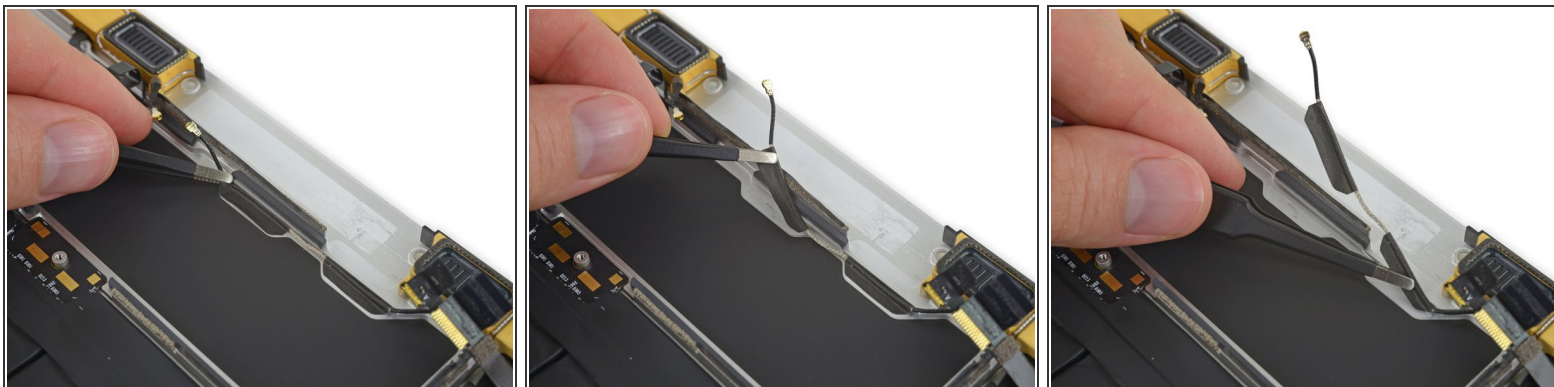
- Using tweezers, remove the foam pad covering the screw on the left side of the right speaker.
- ⚠ If you pull on the foam portion, it will tear. Try to get your tweezers under the adhesive pad holding the foam to the top of the screw.

Step 38



- Remove the two 4.1 mm T3 Torx screws securing the right speaker.

Step 39



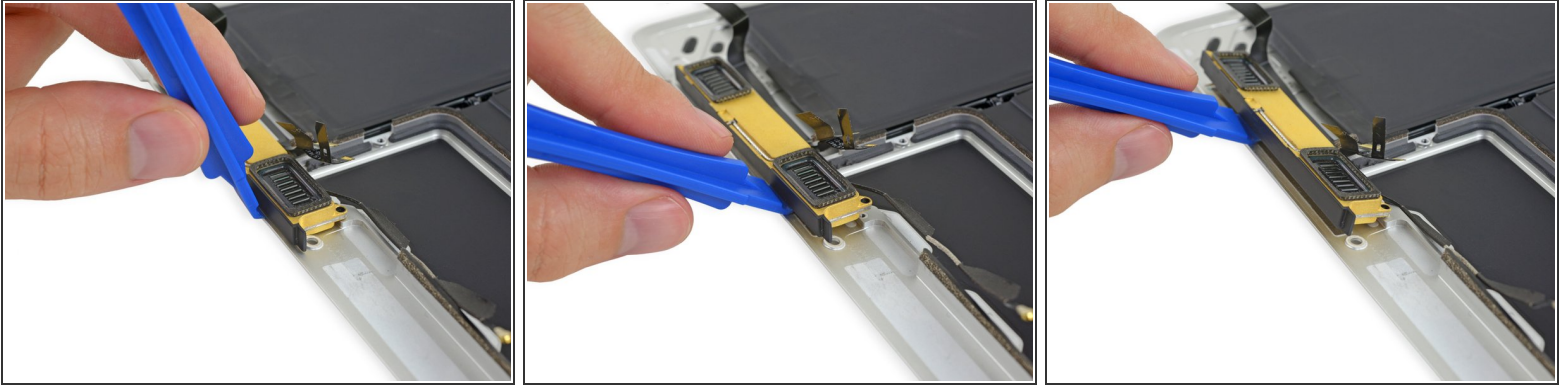
- Using tweezers, carefully peel up the tape securing the right antenna cable to the lower case.

Step 40



- [Prepare an iOpener](#) and heat the lower case directly beneath the right speaker for 1-2 minutes, in order to soften up the adhesive securing the speaker.

Step 41



- Use a plastic opening tool to pry under the top edge of the right speaker, and separate it from the lower case.

Step 42



- Remove the right speaker.

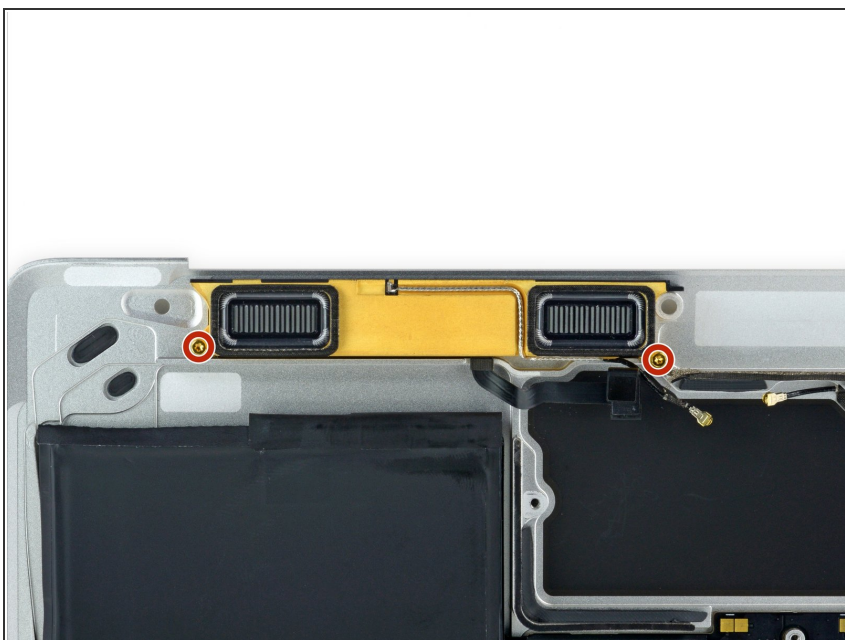
Step 43 — Left Speaker



- Using tweezers, remove the foam pad covering the screw on the right side of the left speaker.

⚠ If you pull on the foam portion, it will tear. Try to get your tweezers under the adhesive pad holding the foam to the top of the screw.

Step 44



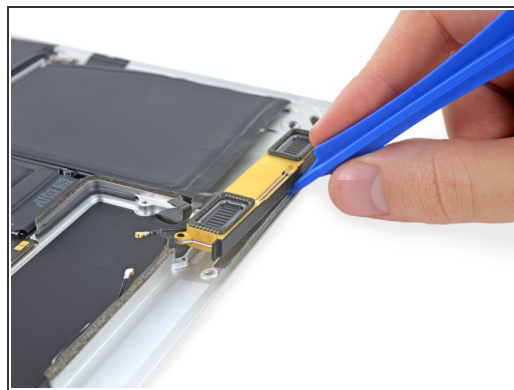
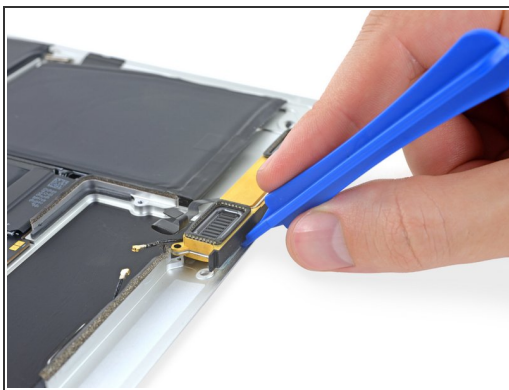
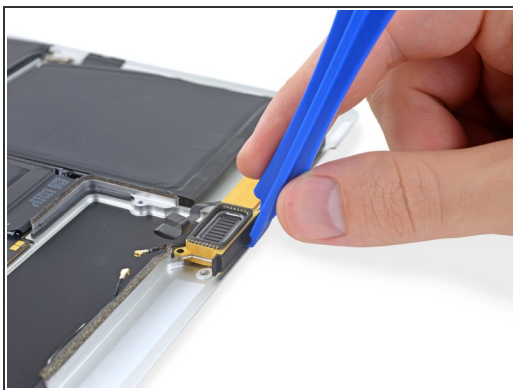
- Remove the two 4.1 mm T3 Torx screws securing the left speaker to the lower case.

Step 45



- [Prepare an iOpener](#) and heat the lower case directly beneath the left speaker, in order to soften up the adhesive securing the speaker.

Step 46



- Use a plastic opening tool to pry under the top edge of the left speaker, and separate it from the lower case.

Step 47



- Remove the left speaker assembly.

Step 48 — Lower Case Assembly



- Carefully peel away the audio board ribbon cable from the adhesive securing it to the lower case.
 - ⚠ Take care not to damage the cable. If the adhesive offers a lot of resistance, first soften the adhesive by heating the lower case directly beneath with an iOpener, and try again.
- Remove the audio board ribbon cable.

Step 49



- Lower case assembly remains.
- ⓘ The battery is strongly glued into place and is commonly replaced together with the lower case. If you need to replace the battery separately, follow the [battery guide](#). The battery should not be re-used or reinstalled after removal.

To reassemble your device, follow these instructions in reverse order.